

SPECIFICATION FOR CRYSTAL FILTER
MCF 28.025...28.385-30/08

Number: 92 311
Drawing: 61 9578

= This set of crystal filters is determined for the preselector of amateur transceivers =

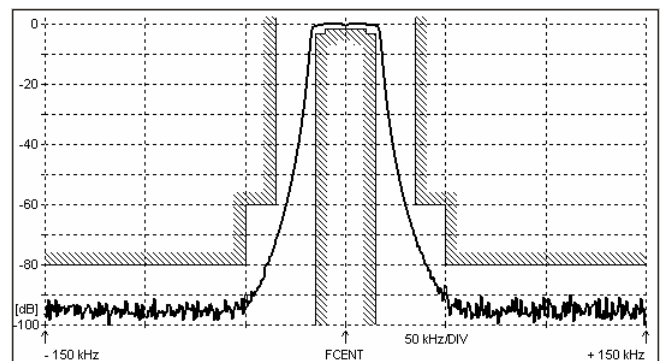
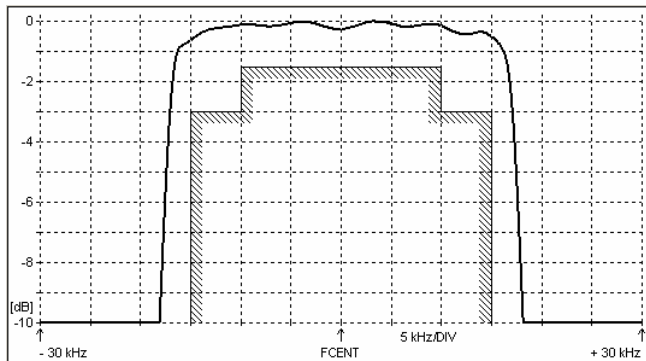
1. Electric values

- 1.0 Number of poles : 8
- 1.1 Nominal centre frequency f_{nom} : Band from 28.025 to 28.385 MHz, with the step 30 kHz
- 1.2 Bandwidth between 3 dB frequencies : $\geq \pm 15$ kHz
- 1.3 Ripple at $f_{nom} \pm 10$ kHz : ≤ 1.5 dB
- 1.4 Insertion loss : ≤ 3.5 dB
- 1.5 Stop band $f_{nom} \pm 35$ kHz : ≥ 60 dB
- $f_{nom} \pm 50 \dots \pm 1000$ kHz : ≥ 80 dB
- 1.6 Terminating impedance (input and output) : 50 Ohm // 0 pF
- 1.7 Operating temperature range : -20°C to +70°C
- 1.8 Case : KF 13 (25.1 x 14.1 x 10.0 mm)
- 1.9 Marking on the case :

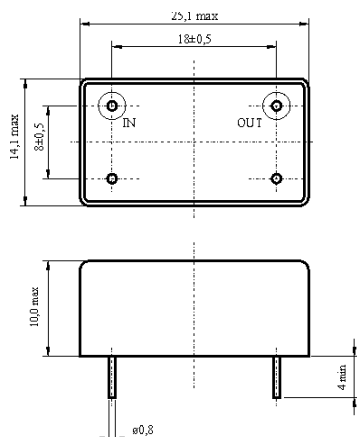
KRYSTALY HK
YYWW
28.xxx-30/08

YY = year
WW = week

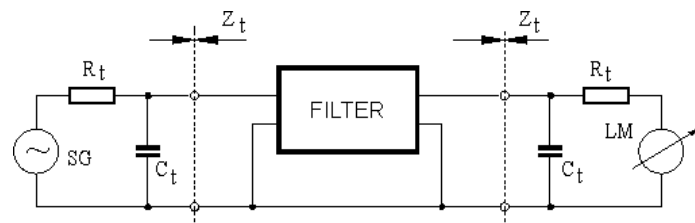
2. Characteristics MCF 28.025...28.385-30/08



Dimensions [mm]
Case KF 13



Measurement Circuit



edited	14.03.2016	P. Seidl
--------	------------	----------