

# SPECIFICATION FOR CRYSTAL FILTER MCF 75.0-36/18

Number: 93 226  
Drawing: 61 9578

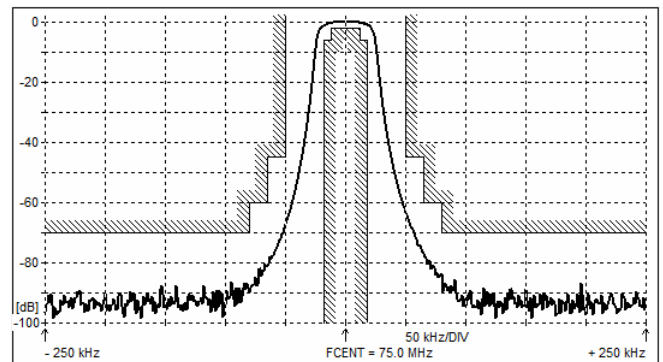
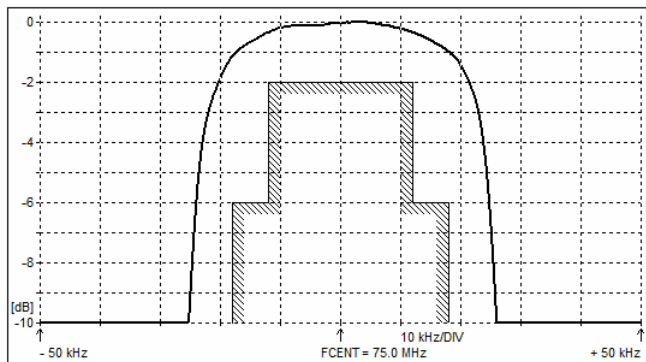
## 1. Electric values

- 1.0 Number of poles : 8 (fundamental mode)
- 1.1 Nominal centre frequency  $f_{nom}$  : 75.0 MHz
- 1.2 Nominal bandwidth between 6 dB frequencies :  $\geq \pm 18.0$  kHz
- 1.3 Ripple at  $f_{nom} \pm 12.0$  kHz :  $\leq 2.0$  dB
- 1.4 Insertion loss :  $\leq 6.0$  dB
- 1.5 Stop band  $f_{nom} \pm 50$  kHz :  $\geq 45$  dB
- $f_{nom} \pm 65$  kHz :  $\geq 60$  dB
- $f_{nom} \pm 80$  kHz :  $\geq 70$  dB
- 1.6 Alternate attenuation :  $\geq 80$  dB (except spurious)
- 1.7 Spurious responses  $f_{nom} + 80 \dots + 3500$  kHz :  $\geq 70$  dB
- 1.8 Terminating impedance ( input and output ) :  $50 \Omega // 0$  pF
- 1.9 Operating temperature range :  $-55^\circ\text{C}$  to  $+85^\circ\text{C}$
- 1.10 Case : KF 13 (25.1 x 14.1 x 10.5 mm)
- 1.11 Marking on the case :

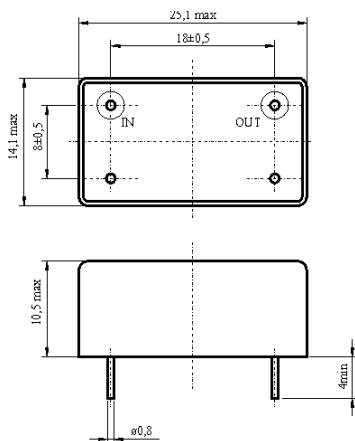
KRYSTALY HK  
YYWW  
75.0-36/18

YY = year  
WW = week

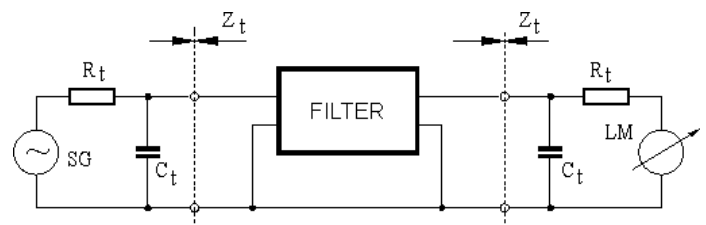
## 2. Characteristics MCF 75.0-36/18



### Dimensions [mm] Case KF 13



### Measurement Circuit



edited 15.08.2024 P. Seidl