

Front-end crystal filters

KF 1xx.xxx-25/6A24

118 MHz to 150 MHz

Number: 99 017

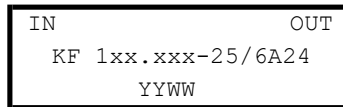
Drawing: 71 0281

1. Electric values

ROHS-Compliant Product

1.0 Number of poles:	6
1.1 Nominal centre frequency f _{nom} :	118 000 ... 150 000 kHz (5 overtone)
1.2 Bandwidth between 3 dB frequencies:	>± 12,5 kHz
1.3 Ripple (f _{nom} ± 9,0 kHz):	< 1,0 dB
1.4 Insertion loss:	< 6,5 dB
1.5 Stop band:	f _{nom} ± 40 kHz: ≥ 40 dB
	f _{nom} ± 53 kHz ... ± 5 MHz : ≥ 60 dB
Ultimate attenuation:	≥ 60 dB
1.6 Spurious response:	≥ 30 dB
1.7 Terminating impedance:	50 Ohm // 0 pF
1.8 Maximum input power level (working / non-damaged):	-5 / +20 dBm
1.9 Operating temperature range:	-20°C ... + 70°C
Operable temperature range:	-20°C ... + 80°C
Storage temperature range:	-40°C ... + 90°C
1.10 Case:	KA 24 (with BNC female) 61.1 x 26.8 x 27.3 mm

1.11 Marking on the case :

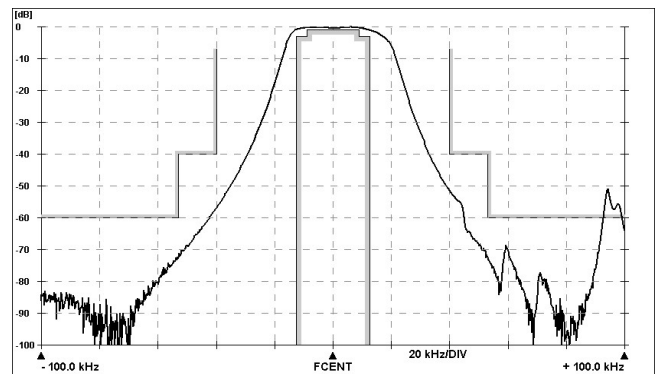
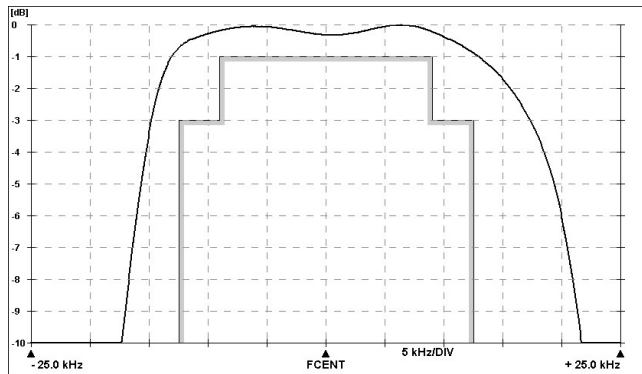


YY - year

WW – week (or customer's marking)

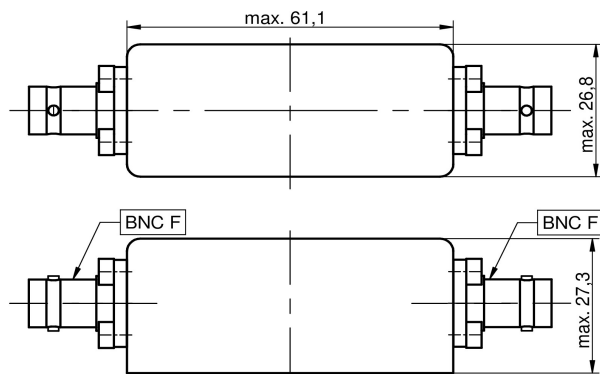
2. Characteristics

KF 1xx.xxx-25/6A24

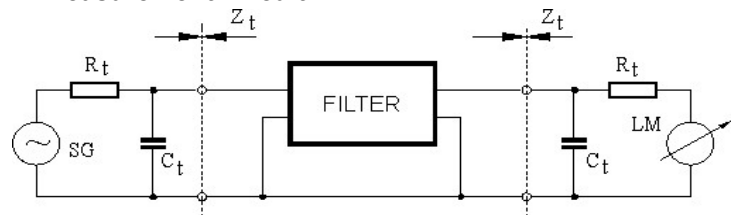


Dimensions KA24

[mm]



Measurement Circuit



edited 15.01.2024 P.Jungling