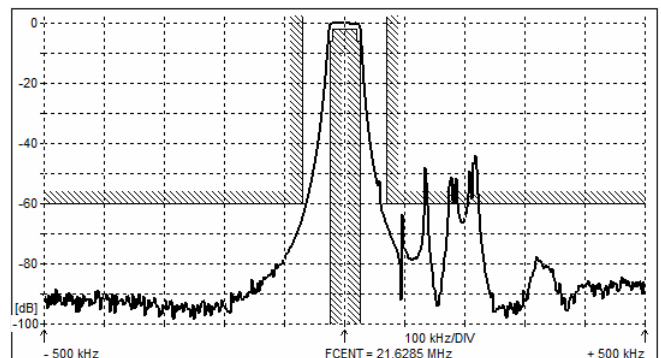
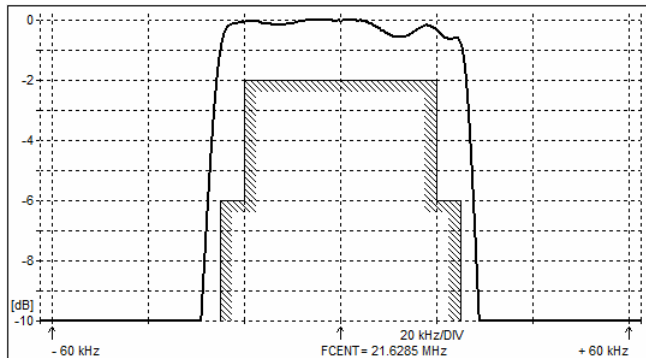
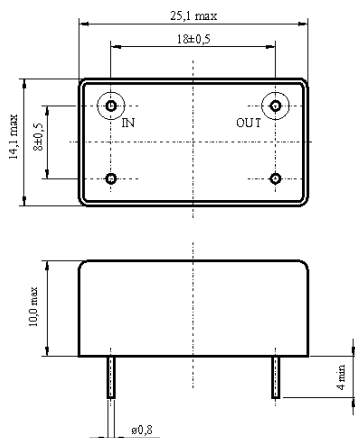
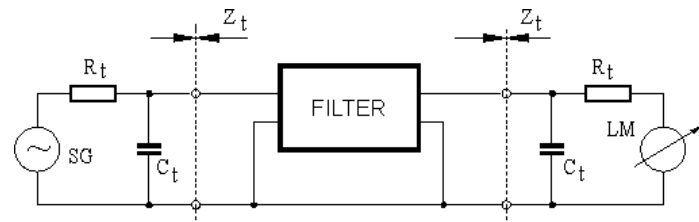
**SPECIFICATION FOR CRYSTAL FILTER**
MCF 21.6285-50/06Number: 93 210
Drawing: 61 9578**1. Electric values**

| | |
|--|--------------------------------|
| 1.0 Number of poles : | 6 |
| 1.1 Nominal centre frequency f_{nom} : | 21.6285 MHz |
| 1.2 Bandwidth between 6 dB frequencies : | $\geq \pm 25$ kHz |
| 1.3 Ripple at $f_{nom} \pm 20$ kHz : | ≤ 2.0 dB |
| 1.4 Insertion loss : | ≤ 3.0 dB |
| 1.5 Stop band $f_{nom} \pm 70$ kHz : | ≥ 60 dB |
| 1.6 Alternate attenuation : | ≥ 60 dB (except spurious) |
| 1.7 Terminating impedance (input and output) : | 50 Ohm // 0 pF |
| 1.8 Operating temperature range : | -40°C to +85°C |
| 1.9 Case : | KF 13 (25.1 x 14.1 x 10.0 mm) |
| 1.10 Marking on the case : | YY = year WW = week |

| |
|--------------------------------------|
| KRYSTALY HK YYWW 21.6285-50/06 |
|--------------------------------------|

2. Characteristics MCF 21.6285-50/06**Dimensions [mm]**
Case KF 13**Measurement Circuit**

edited 10.06.2024 P. Seidl