

SPECIFICATION FOR CRYSTAL FILTER
MCF 21.6285-50/08

Number: 93 211
Drawing: 61 9578

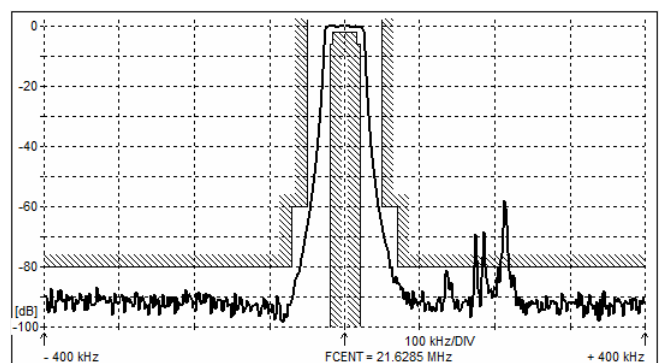
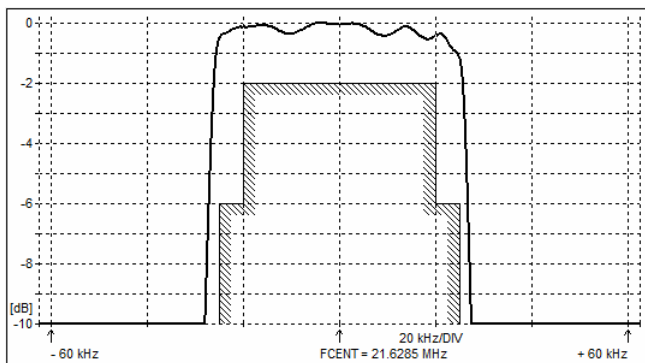
1. Electric values

- 1.0 Number of poles : 8
- 1.1 Nominal centre frequency f_{nom} : 21.6285 MHz
- 1.2 Bandwidth between 6 dB frequencies : $\geq \pm 25$ kHz
- 1.3 Ripple at $f_{nom} \pm 20$ kHz : ≤ 2.0 dB
- 1.4 Insertion loss : ≤ 3.0 dB
- 1.5 Stop band $f_{nom} \pm 50$ kHz : ≥ 60 dB
- $f_{nom} \pm 70$ kHz : ≥ 80 dB
- 1.6 Alternate attenuation : ≥ 80 dB (except spurious)
- 1.7 Terminating impedance (input and output) : 50 Ohm // 0 pF
- 1.8 Operating temperature range : -40°C to +85°C
- 1.9 Case : KF 13 (25.1 x 14.1 x 10.0 mm)
- 1.10 Marking on the case :

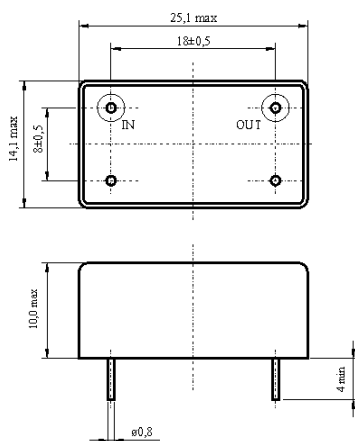
KRYSTALY HK YYWW 21.6285-50/08

YY = year
WW = week

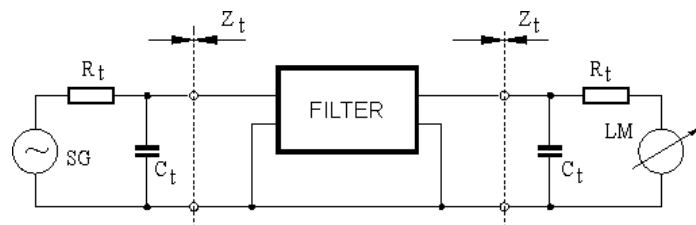
2. Characteristics MCF 21.6285-50/08



Dimensions [mm]
Case KF 13



Measurement Circuit



edited	13.06.2024	P. Seidl
--------	------------	----------