

SPECIFICATION FOR CRYSTAL FILTER MCF 40.048-48/08

Number: 93 173
Drawing: 61 9578

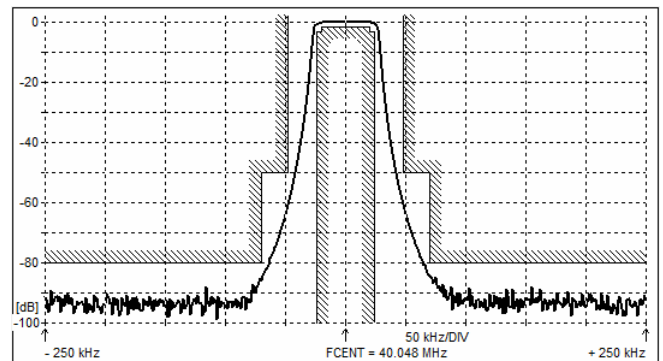
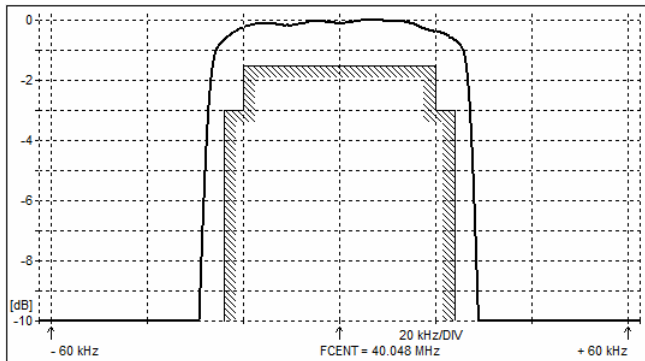
1. Electric values

- 1.0 Number of poles : 8
- 1.1 Nominal centre frequency f_{nom} : 40.048 MHz
- 1.2 Bandwidth between 3 dB frequencies : $\geq \pm 24$ kHz
- 1.3 Ripple at $f_{nom} \pm 20$ kHz : ≤ 1.5 dB
- 1.4 Insertion loss : ≤ 3.0 dB
- 1.5 Stop band $f_{nom} \pm 48$ kHz : ≥ 50 dB
- $f_{nom} \pm 70$ kHz : ≥ 80 dB
- 1.6 Alternate attenuation : ≥ 90 dB (except spurious)
- 1.7 Terminating impedance (input and output) : 50 Ohm // 0 pF
- 1.8 Return loss (In/Out) within $f_{nom} \pm 24$ kHz : ≥ 11 dB
- 1.9 Inband IM at $P_{in} = 0$ dBm at output ($f_{nom} \pm 1.0$ kHz) : ≥ 50 dB
- 1.10 IM at $P_{in} = -6$ dBm at input ($f_{nom} \pm 30$ kHz and $f_{nom} \pm 60$ kHz) : ≥ 71 dB
- 1.11 Operating temperature range : -40°C to $+85^{\circ}\text{C}$
- 1.12 Case : KF 13 (25.1 x 14.1 x 10.0 mm)
- 1.13 Marking on the case :

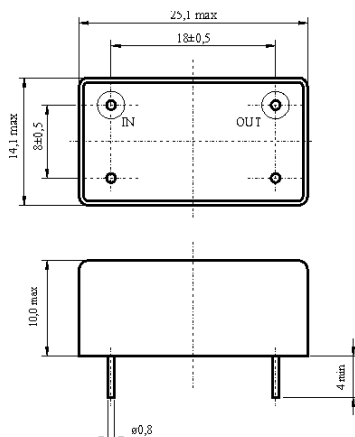
KRYSTALY HK YYWW
MCF 40.048-48/08

YY = year
WW = week

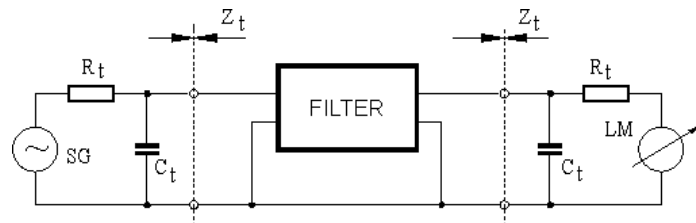
2. Characteristics MCF 40.048-48/08



Dimensions [mm] Case KF 13



Measurement Circuit



edited | 01.03.2024 | P. Seidl